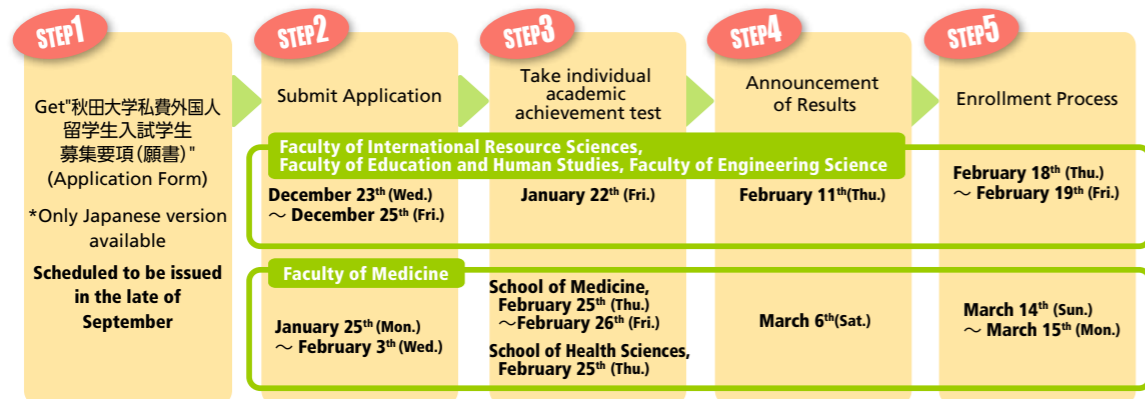


Undergraduate Application (for self-funded international students)

Applicants must take the Examination for Japanese University Admission for International Students (in November) conducted by Japan Student Services Organization (JASSO) prior to submitting their application.



Graduate School Application

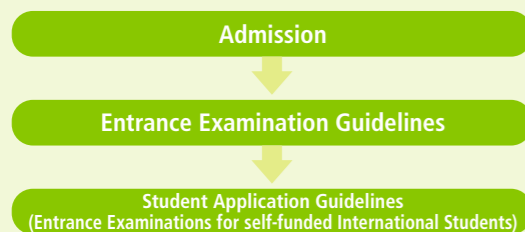
Conditions and schedule for application vary between each graduate school. Please see the websites of each graduate school for information.

Graduate School of International Resource Sciences : <https://www.akita-u.ac.jp/shigen/graduate/info.html>
 Graduate School of Medicine : <http://www.med.akita-u.ac.jp/department/gs/kenkyu-selection.html>
 Graduate School of Engineering Science : <https://www.riko.akita-u.ac.jp/graduate/prospectus/>

How to request the Application Form ("秋田大学私費外国人留学生入試学生募集要項")

*Only Japanese version available

Akita University Website for Applicants
<https://www.akita-u.ac.jp/eng/exam/>



Access



- From Tokyo**
 - Haneda Airport - Akita Airport (1hr 5mins)
 - JR Tokyo Station - Akita Station (approx. 4hrs by Komachi, Akita Shinkansen)
- From Nagoya**
 - Chubu Int'l Airport - Akita Airport (approx. 1hr 25mins)
- From Osaka**
 - Osaka Int'l Airport (Itami) - Akita Airport (approx. 1hr 20mins)
- From Sapporo**
 - New Chitose Airport - Akita Airport (55mins)



Akita University Global Center for Higher Education

1-1 Tegatagakuen-machi, Akita City, Akita 010-8502
 TEL+81-18-889-2258 FAX+81-18-889-3012
 E-mail : ryugaku@jimu.akita-u.ac.jp
<https://www.akita-u.ac.jp/honbu/inter/index.html>
 Published in September 2020



Guide for International Students



Akita University

Akita University

Akita University is a comprehensive national university consisting of both undergraduate and graduate programs. Formerly known as Akita Normal School, Akita Young Men's Normal School, and Akita Mining College, it was later established as Akita University in 1949.

Student Figures (as of May 1, 2020)

◆ Students: 5,095 (Undergraduate 4,370, Graduate 725)

◆ International Students: 197 (Undergraduate 114, Graduate 83) *The figure includes degree seeking international students.

Faculties	Total number admitted	International Students		
		Degree-seeking	Non Degree-seeking	Total
International Resource Sciences	509	12	3	15
Education and Human Studies	882	6	8	14
Medicine	1,231	4	0	4
Engineering Science	1,748	78	3	81
Total	4,370	100	14	114

Graduate Schools	Total number admitted	International Students		
		Degree-seeking	Non Degree-seeking	Total
International Resource Sciences	111	45	1	46
Education	35	0	1	1
Medicine	205	0	1	1
Engineering Science	374	35	0	35
Total	725	80	3	83

Overseas Partner Universities (as of May 1, 2020)

Inter-University Agreements

● 62 Universities (30 Countries and Regions)

Countries/Regions	Universities	Student Exchange Agreement
Asia	India: Indian Institute of Technology Madras	●
	India: VIT University	●
	Indonesia: Institut Teknologi Bandung	●
	Indonesia: Trisakti University	●
	Indonesia: Universitas Gadjah Mada	●
	Indonesia: Universitas Pertamina	●
	Indonesia: Padjadjaran University	●
	Korea: Hanbat National University	●
	Korea: Wonkwang University	●
	Korea: Kangwon National University	●
	Thailand: Chulalongkorn University	●
	Thailand: Suranaree University of Technology	●
Asia	Taiwan: National Taiwan University	●
	Taiwan: National Changhua University of Education	●
	China: Heilongjiang University	●
	China: China Medical University	●
	China: Central South University	●
	China: Liaoning Technical University	●
	China: Dalian Minzu University	●
	China: Lanzhou University	●
	China: Jilin University	●
	China: Northeastern University	●
	China: Donghua University	●
	China: Tongji Medical College	●
Europe (Including NIS)	Germany: Huzhong University of Science and Technology	●
	Germany: Chang'an University	●
	Germany: Beihua University	●
	Germany: Jiaxing University	●
	Germany: Northwest Normal University	●
	Germany: University of the Philippines Diliman	●
	Germany: University of the Philippines Manila	●
	Germany: Hanoi University of Science and Technology	●
	Vietnam: University of Transport and Communications	●

Inter-Faculty Agreements

● 29 Faculties (18 Countries and Regions)

Faculties	Countries/Regions	Faculties, Universities	Student Exchange Agreement
Graduate School of International Resource Sciences	Asia	Indonesia: Faculty of Engineering, Hasanuddin University	●
		Indonesia: Faculty of Geological Engineering, Universitas Padjadjaran	●
		Thailand: Faculty of Science, Kasetsart University	●
	Middle East	Sudan: Faculty of Earth Sciences Faculty of Marine Sciences and Fisheries, Red Sea University	●
		Serbia: Technical Faculty in Bor, University of Belgrade	●
		Poland: The AGH University of Science and Technology	●
	North America	Canada: Institut National de la recherche scientifique, Université du Québec	●
		Asia: Korea: Korean Language School of Sungkonghoe University	●
		China: Beijing Hospital, Ministry of Health	●
	Faculty of Education and Human Studies	Asia: Singapore: Alice Lee Center for Nursing Studies, Yong Loo Lin School of Medicine, National University of Singapore	●
		Thailand: School of Nursing Suranaree University of Technology	●
		Europe: France: The Faculty of Medicine of Lille 2 University	●
Graduate School of Medicine	North America: USA: John A. Burns School of Medicine University of Hawaii	●	
	North America: USA: The First Hospital of Lanzhou University	●	
	Asia: China: The First Hospital of Lanzhou University	●	
Akita University Hospital	Asia	Taiwan: College of Engineering Minghsin University of Science and Technology	●
		China: Department of Precision Instruments and Mechanology, Tsing Hua University	●
		China: Department of Chemistry, Tsing Hua University	●
	Graduate School of Engineering Science	China: School of Materials Science and Engineering, Tongji University	●
		China: Shanghai Key Lab of D&A for Metal Functional Materials, Tongji University	●
		India: The CSIR-Indian Institute of Chemical Technology	●
	Africa	Zambia: School of Mines, University of Zambia	●
		Zambia: School of Engineering, University of Zambia	●
		Tunisia: Faculty of Technology, University of Sfax	●
	Oceania	New Zealand: Faculty of Design & Creative Technology, AUT University	●
		North America: USA: Montana College of Mineral Science and Technology	●
		Europe: Hungary: Faculty of Informatics, University of Debrecen	●
Center for Regional Development	Europe	Slovakia: Comenius University	●
		Asia: China: Shanghai Key Lab of D&A for Metal Functional Materials, Tongji University	●
		China: University of Bucharest	●

※Student Exchange based on Inter-Faculty Agreements are vary by faculty.

春 Spring

夏 Summer

Akita

An abundance of nature and traditional culture changing along with the four seasons.

Akita Prefecture is located in northern Honshu on the Sea of Japan. It offers a rich natural environment including the Shirakami mountain range (a World Heritage site), Lake Tazawa (the deepest lake in Japan), Hachimantai, and Oga Peninsula, where the four seasons can be distinctly experienced and enjoyed. Akita's seasonal festivities include the Sakura (cherry blossom) festivals in spring, Kanto festival (one of the three great Tohoku festivals) in summer, viewing fall foliage in autumn, and a variety snow sports (skiing, snowboarding, etc.) in winter.

The university's campus is located in Akita City with a population of 320,000. It is the capital of Akita Prefecture, and is also the prefecture's political and economic center. It is convenient in terms of transportation and has a lower cost of living than Tokyo. Students find the city a very suitable environment for daily life.



Kanto Festival

Held every year from August 3 – 6 in Akita City. The largest Kanto Pole is 12 meters in height and weighs approximately 50 kgs. Balancing the giant Kanto using their hands, lower back and forehead, the dancers display their skills while competing with one another. The university also has a kanto team.



Namahage Event

An ethnic tradition originating from the Oga Peninsula, held on New Year's Eve. Namahage are said to be messengers of the gods.



Lake Tazawa

Japan's deepest lake, located in the city of Semboku. (Maximum depth 423.4 m) It is approximately 1 hour away from the university and it is a great place to enjoy canoeing or rafting.



Kiritampo

Kiritampo, part of Akita's regional cuisine, is rice that has been mashed and wrapped around a skewer, then toasted and finally cut into easy-to-eat pieces. When it is added to a hot pot with chicken, vegetables, mushrooms, etc. it is called "Kiritampo Nabe" (Kiritampo hot pot).



Onsen (hot springs)

Akita has many hot springs, the most famous being Nyuto Hot Spring Village and Tamagawa Hot Spring. This photo features the open-air bath at Nyuto Hot Spring Village.

秋 Autumn

冬 Winter

Undergraduate

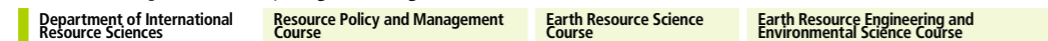


Faculty of International Resource Sciences

Japan is facing problems associated with the allocation of the earth's resources such as economic minerals and petroleum resources. With these challenges in mind, the new faculty of International Resource Sciences was launched in 2014 with the purpose of developing global human resources to address these problems.

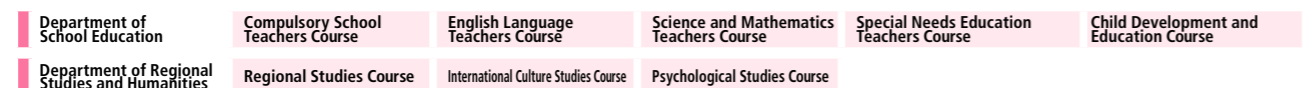
We provide a unique education experience in resource sciences by offering specialized education in English, overseas resource science fieldwork and an interdisciplinary approach to resource science education.

The faculty consists of 3 programs : The Department of Resource Policy and Management fosters resource policy-making professionals with the ability to analyze and conceptualize global resource trends accurately and negotiate effectively. The Department of Earth Resource Science cultivates front-line geologists and researchers to predict resource distribution across the globe and explore new possibilities for natural resources. The Department of Earth Resource Engineering and Environmental Science produces engineers and researchers capable of contributing to resource development and recycling technologies.



Faculty of Education and Human Studies

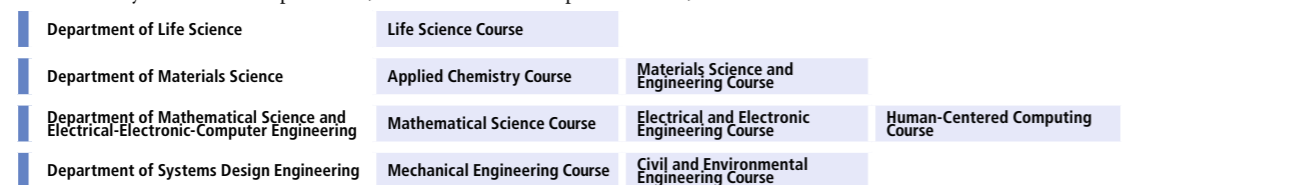
The Faculty of Education and Human Studies consists of the Department of School Education and the Department of Regional Studies and Humanities. The Department of School Education focuses on teacher training with particular emphasis on elementary education, which includes pre-school and junior-high school education. The goal of the Department of Regional Studies and Humanities is to produce talented graduates who can play a central role in their local communities in areas such as the local economy, cultural development, and community development and revival.



Faculty of Engineering Science

The Faculty of Engineering Science has been restructured, placing a greater emphasis on integrating “the sciences”, which seek to understand nature through the process of refining and producing resource materials with “engineering”, which finds practical applications for refined resources that benefit society. Based on those terms, the Faculty aims to develop talented graduates with logical thinking skills and the ability to realize and implement innovative ideas.

The Faculty consists of 4 departments, which consists of 8 separate courses, as listed below.



Faculty of Medicine

We are training talented students who are able to maintain an international perspective and who can contribute to people's health and welfare. We do this by first making sure that our students have a broad educational background rooted in the humanities. Our students are flexible and adaptable allowing them to adjust accordingly to the ever advancing fields of medicine and healthcare. Over time our students develop an ability to solve problems, and a firm understanding of medical and health sciences. Other than working as a medical professional in a clinical setting, these programs also offer the possibility of on into graduate school to become a researcher or instructor, or any number of other advanced specialists in the medical field continuing.



Graduate

Graduate School of International Resource Sciences

The Graduate School of International Resource Sciences aims to study global resource problems and stimulate critical and creative thinking to develop strategies to help solve problems of energy and resource development, production and distribution. We strongly encourage international students to apply for this program. All the lectures are provided in English.

Master's Degree Program

- Earth Resource Science
- Earth Resource Engineering and Environmental Science

Doctoral Degree Program

- Geosciences, Geotechnology, and Materials Engineering for Resources

Graduate School of Engineering Science

The Graduate School of Engineering Science aims to produce top-level internationally-minded engineers and researchers who can contribute to regional industry development as well as the international community. Additionally, the school enhances cooperation with regional companies and local governments in order to promote regional revitalization which is becoming an urgent issue.

Master's Degree Program

- Life Science
- Materials Science
- Mathematical Science and Electrical-Electronic-Computer Engineering
- Systems Design Engineering
- Cooperative Major in Life Cycle Design Engineering

Doctoral Degree Program

- Integrated Engineering Science

The Doctoral Degree Program provides a separate English course in which the entire curriculum is conducted in English.

Graduate School of Medicine

The Graduate School of Medicine aims to train excellent researchers and highly specialized medical staff who possess an international perspective, and who can promote the most advanced research in medicine, medical, and life sciences, all of which contribute to the development of human health and welfare.

Master's Degree Program

- Medical Science

Master's Degree Program

- Health Sciences
- Nursing Science
- Rehabilitation Science

Doctoral Degree Program

- Medicine

Doctoral Degree Program

- Health Sciences
- Science for Supporting the Development of Woman and Children
- Lifelong Development and Health Care Support Nursing

Admissions

1. Self-funded International Students

Category	Purpose	Notes	Application
Undergraduate Students	Degree Seeking (Bachelor)	Must earn required credits and be enrolled at the University for minimum of 4 years (6 years for medical students).	See "Selection Criteria for Self-funded International Students"
Graduate Students	Degree Seeking (Master/Doctorate)	Take required courses, pass final exams, and pass thesis review. Master's Degree Required to be enrolled in one of the following programs for a minimum of 2 years: Graduate School of International Resource Sciences Program Graduate School of Medicine Program, Graduate School of Engineering-Science Program. Doctoral Degree Health Sciences: 3 years minimum enrollment. Medicine: 4 years minimum enrollment. International Resource Sciences, Engineering Science: 3 years minimum enrollment.	See Graduate Schools' Websites
Exchange Students Short-term Exchange Students (Undergraduate, Graduate) Short-term Research Students (Graduate)	Non-degree Seeking	Only available for students enrolled in our partner universities with international student exchange agreements. Required to attend programs from a semester to a year. Undergraduate Credits and transcript of results issued. Graduate Certificate of course completion issued. * Minimum enrollment of 10hours per week is required for obtaining a student visa.	for April start: Apply by late-November of previous calendar year. for October start: Apply by mid-May of the same calendar year.
Non-degree Study Students	Non-degree Seeking	Required to attend regular courses and obtain required grades. * Minimum enrollment of 10hours per week is required for obtaining a student visa.	Inquire directly to each Faculty and Graduate School
Research Students	Preparing for Graduate School	Required to be engaged in research of specific themes under the supervision of an approved advisor.	Inquire directly to each Faculty and Graduate School

2. Japanese Government Sponsored International Students

*See the Ministry of Education, Culture, Sports, Science and Technology website for more information.

Category	Purpose	Notes	Application
Undergraduate Students	Degree Seeking (Bachelor)	Same as "1. Self-funded Undergraduate Students" (above).	Embassy recommendation necessary. (apply through overseas Japanese diplomatic office)
Graduate Students (Research Students)	Degree Seeking (Master/Doctorate)	Same as "1. Self-funded Graduate Students" (above).	Embassy recommendation (apply through overseas Japanese diplomatic office) or University recommendation (consult with your university or graduating university) necessary.
	Non-degree seeking	Same as "1. Self-funded Research Students" (above).	
Japanese Studies Students, "Nikken-sei"	Non-degree Seeking	Complete a 1-year program to improve Japanese language skills and understanding of Japan and its culture.	
Teacher Training Students, "Kyoken-sei"	Non-degree Seeking	Only applicable for in-service teachers or teachers currently undergoing teacher training in their home country. Taking a Japanese language course is compulsory and students must be able to research under supervision in Japanese.	Embassy recommendation necessary. (apply through overseas Japanese diplomatic office)

*Sufficient Japanese language proficiency is necessary to study at Akita University as most lectures and programs are provided in Japanese.

Financial Support

(1) Deferral of university fees (for privately financed international students)

This system enables students who are considered to have excellent academic prospects but have difficulties paying their entrance fees on time for financial reasons to defer their payments. Students must apply for permission to defer payment prior to beginning their studies at the University.

For details, see "University Fees/Living Expenses/Scholarships" (https://www.akita-u.ac.jp/honbu/life/li_lifesupport.html) or "Akita University Entrance Examination Guidelines for Privately Financed International Students" (to be announced in mid-September) on the Akita University website.

(2) Scholarship *Scholarships are awarded competitively to students after a review process.

a) Monbukagakusho Honors Scholarship for Privately Financed International Students

Scholarship program for self-funded international students (excluding exchange students) provided through Japan Student Services Organization (JASSO)

b) Privately Financed Scholarships

Various scholarship programs for self-funded international students (excluding exchange students)

c) Akita University (Scholarship for New University Entrants)

Students who are facing financial difficulties (including self-funded international students) are eligible for a grant payment of up to a maximum of 100,000 yen.

Student Exchange Programs

Only available for international students enrolled in partner universities with an Agreement on Student Exchange.

1 Akita University Academic Japanese Program (AUAJ)

In principle, this is a program for students who have majored in Japanese Language or Japanese Language Education, and have a Japanese language proficiency greater than or equivalent to the Japanese-Language Proficiency Test (JLPT) level N2. The program aims to provide students with advanced Japanese language skills, expertise, and motivation for various academic activities.

Program Length: 1 year (April to February, or October to August)

2 Akita University Program for Solving of the Regional Problem (AUSR)

International students will take active roles in exchange activities centered around local events alongside local residents while studying Japanese language and their specialized fields of study in order to meet the aims of the people from Akita. In the second half of the program, students will create and conduct projects which contribute to regional revitalization through activities in which they will cooperate with Japanese students and the local residents.

Program Length: 1 year (October to August)

3 Akita University General Program (AUGP)

A flexible program for students who do not wish to undertake AUAJ or AUSR. Students can participate in classes of their own choice for either 1 or 2 semesters.

Program Length: 6 months to 1 year (starting April or October)

Facilities



Cafeteria

Providing meals on weekdays from 8:00 a.m. to 7:30 p.m.



Library

Ample study space.



Convenience Store

Light meals such as bentos and drinks are available here.



Culture Exchange Lounge

International students are free to use this space. It's open on weekdays from 8:30 a.m. until 5:00 p.m.



Book Store

You can purchase textbooks, other books or stationery items here.



Health Center

Staffed with doctors, nurses and counselors.



International Affairs Division

General advice and guidance are provided for international students. If you ever have a problem, please come in for a consultation any time.

Campus life

Orientation and Welcome party for International Students

At Orientation, we provide the efficient information such as administrative procedures at the city hall, the bank, registration for classes, and important points for daily life in Japan etc. We introduce important facilities in our campus tour. We throw a welcome party to incoming international students to offer the occasion to communicate with other international students and faculty members.



April : Orientation and Welcome party for International Students



7
JULY

8
AUGUST

9
SEPTEMBER

4
APRIL

5
MAY

6
JUNE



October : Farming Tour

Farming Tour

This event is a farming experience program that is held twice in autumn every year. The first one is an "Overnight Farm Stay" held in October, and the second one is a "Harvest Festival Tour" held in November. During the "Overnight Farm Stay" students experience farm work, and take part in a homestay with a farming family. During the "Harvest Festival Tour" students have the chance to cook with freshly harvested rice and vegetables.



December : Mochi (rice cake) Pounding

Mochi (rice cake) Pounding

Students can experience the Japanese cultural tradition of "Mochi-tsuki" or kneading rice, using the traditional method. The freshly kneaded mochi is made into sweets.

There are so many fun events!

10
OCTOBER

11
NOVEMBER

12
DECEMBER

1
JANUARY

2
FEBRUARY

3
MARCH

Tutor System

Soon after international students enter Akita University, they are assigned a student (tutor) who will provide them with necessary support for their studies at the university and their every day life.

Skiing tour

Every year in February, we arrange a Skiing tour for international students and Japanese students. Instructors will help beginner students enjoy the event.



February : Skiing tour



(1) Tuition (2020 enrolled students)

Category	Tuition Fee	Admission Fee	Examination Fee
Undergraduate Students	¥535,800 per year *	¥282,000	¥17,000
Graduate Students	¥535,800 per year *	¥282,000	¥30,000
Short-term Exchange Students Short-term Research Students	Fees are waived based upon the "Agreement on Student Exchange" between Akita University and the partner universities.		
Non-degree Study Students	¥14,800 per credit	¥28,200	¥9,800
Research Students	¥29,700 per month	¥84,600	¥9,800

*Annual tuition fee to be paid in two payments (one for each semester).

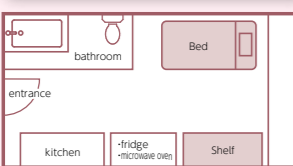
*Government Sponsored International Students are waived from tuition/admission/examination fees.

Accommodation

1. Dormitory House for International Students

1 International House "A" and "B"

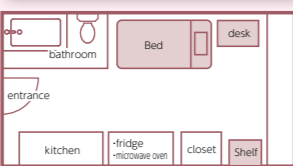
5 minute walk to the University



Boarding fee	(House A) Single rooms: ¥5,900/month
	(House B) Single rooms: ¥15,000/month <small>*water, electricity and other living expenses not included</small>
Maximum period of residence	1 year

2 International Student House

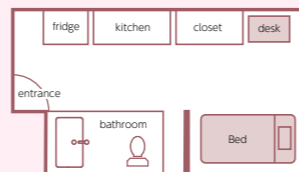
15 minute walk to the University



Boarding fee	Single rooms: ¥5,900/month <small>*water, electricity and other living expenses not included</small>
Maximum period of residence	1 year

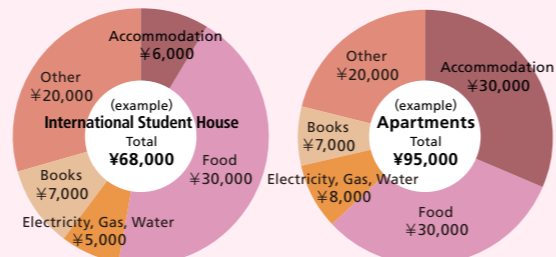
3 Nishiyachi Men's Dormitory

15 minute walk to the University



Dormitory house for both Japanese and international students. It is available until graduation. Boarding fee is ¥20,000/month.

Rough indication of monthly living expenses



Student's Voice

I am satisfied by daily life in the International House, because there are all facilities for a comfortable student's life. It is clean, new and the location is very convenient. Moreover, I can use a big lounge for teatime with my friends.
Akhetvalyeva Zarina (from Kazakhstan)

International Student House is as quiet as Akita city. Rent is inexpensive and the location is very good. There are lots of supermarkets around the dormitory and it is very convenient.
Wu Tiang (from China)

2. Private Apartments

Apartments are usually found through Akita University Co-op or local real estate agents. Rent varies depending on the area or age of the apartment but is generally approximately ¥30,000/month for a 6-jo studio apartment with a kitchen and bathroom. (1-jo = 180cm×90cm)

*2 or 3 months' rent as a deposit and / or "key money" may be required up front for signing a rental contract.

Support for Private Apartments

In the case that students cannot find a guarantor for an apartment lease, Akita University serve as guarantor. In this case, students have to apply to "Comprehensive Renter's Insurance for Foreign Students Studying in Japan". The insurance costs ¥8,000 for a two year contract.

Message from Seniors



Malaysia

AMANDA LEAN RINA

Program in Psychological Studies Department of Regional Studies and Humanities, Faculty of Education and Human Studies

First steps to finding yourself

Last year was a bit stressful because I received acceptance letters from several universities and I couldn't decide which one to go to. It was cold and snowy when I came to Akita in the winter to sit for my exam, but I met so many friendly people here, and not just the teachers who interviewed me. I ended up choosing Akita because of the opportunity to study the one subject I really wanted to pursue. The reason why I came to Japan originally was to study psychology, and Akita is one of the few universities in Japan where international students can take this course. The Program in Psychological Studies is offered by the Department of Regional Studies and Humanities: being able to study such a wide range of topics in the first year is very appealing.

Akita has beautiful scenery, delicious food, and so many smiling people! When you wake up in the morning you hear the birds rather than the noise of trains, and you can breathe in fresh air. It's the perfect environment for relaxing and concentrating on your studies.

I've had so many wonderful encounters and experiences since coming here. The international students all help each other, regardless of their nationality. Last year, there were lots of activities to enjoy, such as parties, BBQs, karaoke sessions, festivals, skiing, farming experiences and homestays. Akita University sponsors a variety of events for international students, giving us unprecedented experiences and helping us learn about different cultures and customs.

The teachers and staff of the International Affairs Division give us their full support in our studies and put us completely at ease. Of course, it can be difficult, but I'm so glad that I chose Akita University. I feel so happy, I'm enjoying myself every day and living life the way I want to. It's something that everyone should experience for themselves. Hope to see you soon at Akita University!



Thailand

KANKANOKJIRASIN PANYAPOL

Master's Degree Program, Mechanical Engineering Course, Department of Systems Design Engineering, Graduate School of Engineering Science

I studied Japanese for a year and a half in Tokyo. When I was comfortable with everyday conversations in Japanese, a teacher from my language school recommended Akita University to me.

I started at the University in December 2018. It was my first time in Akita. My first scenic view was a beautiful vista of the "snow country." The atmosphere was so peaceful, I could feel nature all around me, and the air was so fresh!

When I moved to Akita I felt very anxious. My Japanese wasn't so good, and I didn't know anyone here. Fortunately, the University has an International Affairs Division, and they gave me a lot of help with matters like my visa, scholarship funds and finding accommodation. Membership is free, they give you a tour of the facility and they have information on all sorts of events in Akita.

Akita has a small population, but the town has many shops and department stores, and as you'd expect, plenty of wonderful natural sightseeing spots. Spending time somewhere with such a good balance between nature and the man-made world makes me feel calm inside. My everyday life has changed. For example, I regularly ride a bicycle instead of taking the train; I often cook for myself instead of eating out. This change in lifestyle also means I spend less on my daily living costs. Another feature of Akita is that it has very few foreigners compared to other parts of Japan. This helps you gain a deep understanding of Japanese language and culture.

A quick word about my research and studies here. As a graduate student studying precision measurement methods, I go to the laboratory every day. Precision measurement is the measurement of small-sized parts. For example, the shape of an old mobile phone differs from that of a modern smartphone. A smartphone is light and durable, and one of the reasons for this is that its parts are much smaller. Advanced measurement methods are required to make small parts like this. There are undergraduates as well as graduate students in the laboratory. If I don't understand something related to my assignments or class reports, I can always count on my friends and senior colleagues in the lab to help me. Graduate students spend most of their time on research so I'm regularly consulting with my teachers. The academic advisors are so kind and considerate; I talk to them about my research, but also about plans after graduation and my everyday life.

All in all, I really feel Akita University is the best place for an international student to study in Japan!