



TUITION AND FEES

for 2020 enrollees

Admission Fee : 200,000 JPY
Annual Tuition : 2,300,000 JPY

SCHOLARSHIPS

The scholarship systems may be subject to change.

Tuition Reduction for International Students with a status of residence of "Student"

100% Reduction
50% Reduction
20% Reduction

- No separate application is required. The amount of reduction will be notified with admission results.
- Scholarship awards are based on merit: admissions results for the 1st year and academic grades for each year from the 2nd year onwards.

Scholarships awarded to all students who study at ANU in the dual degree program

- College of Global Liberal Arts Scholarship for Study Abroad**
700,000 JPY/year
- Though students can receive both scholarships 1 and 2 at the same time, neither of them can be awarded in combination with other scholarships specified in the university policies.
- Ritsumeikan University Study Abroad Challenge Scholarship**
300,000 JPY/year
- These scholarships are awarded only during the studies at ANU in Canberra.

HOW TO APPLY http://en.ritsumeikai.ac.jp/e-ug/apply/gla/gla_apply.html/



CONTACT

College of Global Liberal Arts, Ritsumeikan University, Osaka Ibaraki Campus (OIC)
 2-150 Iwakura-cho, Ibaraki-shi, Osaka 567-8570 JAPAN
 Email: glapost@st.ritsumeikai.ac.jp Tel: +81 72 665 2492

Publication Version [May, 2020]
 Information in this document is correct and valid as of publication date. Visit the website for the latest information. (en.ritsumeikai.ac.jp/gla)
 Information in this document only applies to students who apply and enroll through Ritsumeikan University.

Study in Japan and Australia



Australian
National
University

College of Asia & the Pacific (CAP)
Bachelor of Asia-Pacific Affairs

R RITSUMEIKAN
UNIVERSITY

College of Global Liberal Arts (GLA)
Bachelor of Global Liberal Arts

Graduate with **2** degrees from **2** universities

Dual Degree Program

Ritsumeikan University (RU) has partnered with the Australian National University (ANU) to offer a truly international learning experience by launching a dual degree program – Bachelor of Global Liberal Arts and a Bachelor of Asia Pacific Affairs. Through this dual degree program, students will have the opportunity to graduate with two degrees – one from RU and one from ANU. In Japan, they will study the liberal arts, with a focus on becoming a proactive member of the global society in the twenty-first century. In Australia, they will experience the dynamism of globalization firsthand and deepen their studies of the Asia-Pacific region. Studying in two different institutions will bring different perspectives, different opportunities, different expectations, that will provide students with more career options in the future.

Bachelor of Global Liberal Arts

Develop critical and flexible thinking to be able to adapt to a changing world

New liberal arts for the new era

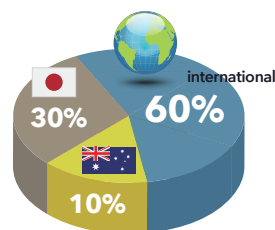
GLA goes beyond the boundaries of a traditional western rooted liberal arts education. By reframing the lens through which the world is examined and by understanding history within the context of Asian culture, students will develop into leaders who envision their goals and create future change.

International & diverse environment

The diverse student body of GLA will allow students to explore new perspectives and foster connections with peers and academics worldwide.

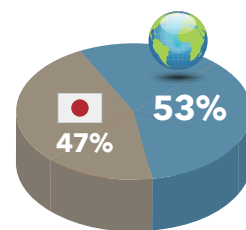


STUDENT DIVERSITY

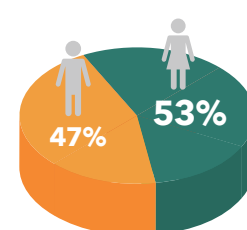


Annual Student Intake 100

FACULTY DIVERSITY



10 out of 19 Non-Japanese



10 out of 19 Female Faculty

Bachelor of Asia Pacific Affairs

Understand and appreciate the Asia-Pacific region and its importance in the 21st century

Great emphasis on research

ANU is a research-intensive university with research priorities that reflect the challenges facing the world today.

Coral Bell School of Asia Pacific Affairs A leading institution in Politics and International Studies



The Coral Bell School of Asia Pacific Affairs (Bell School) is part of the ANU College of Asia and the Pacific. It is committed to delivering distinctive excellence in research that positively influences policy in Australia, in the Asia-Pacific region, and internationally. The Bell School is recognized as the pre-eminent centre in the region and one of the best in the world for research excellence and policy analysis in the political, societal, diplomatic, security and strategic dimensions of international and Asia Pacific affairs.



In the heart of Australia's capital city, Canberra

The University's "park like" campus is in the heart of Australia's capital city, Canberra. ANU attracts leading academics and outstanding students from Australia and around the world. ANU has more than 7,400 international students from various countries.

#1

in Australia

*QS World University Rankings 2020

#8

in the world
for Politics and
International
Studies

*QS World University Rankings 2020

#29

in the world

*QS World University Rankings 2020

TOP
GLOBAL
UNIVERSITY
PROJECT

History
120+
years

2600+
International
Students

RITSUMEIKAN UNIVERSITY

RU

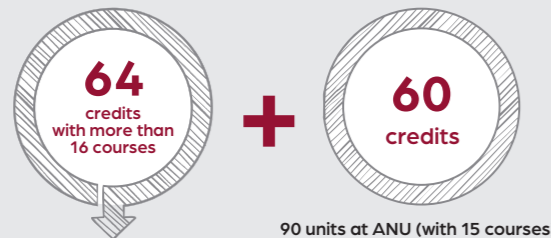
ANU

THE AUSTRALIAN NATIONAL UNIVERSITY

Broaden your Intellectual Horizons

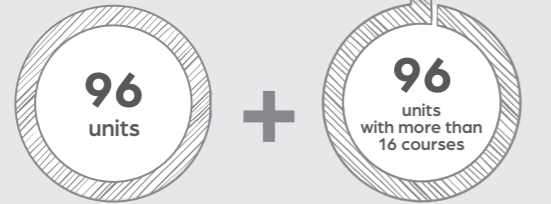
from inside Asia and outside Asia

RITSUMEIKAN UNIVERSITY Degree: Bachelor of Global Liberal Arts
124 credits are required to receive a degree



64 credits at RU (with 16 courses) are counted as 96 units at ANU

90 units at ANU (with 15 courses) are counted as 60 credits at RU



Australian National University Degree: Bachelor of Asia Pacific Affairs
192 units are required to receive a degree

Two degrees in four years

Upon graduation, students will earn two degrees, a Bachelor of Global Liberal Arts from RU, and a Bachelor of Asia Pacific Affairs from ANU.

Dual Degree Structure

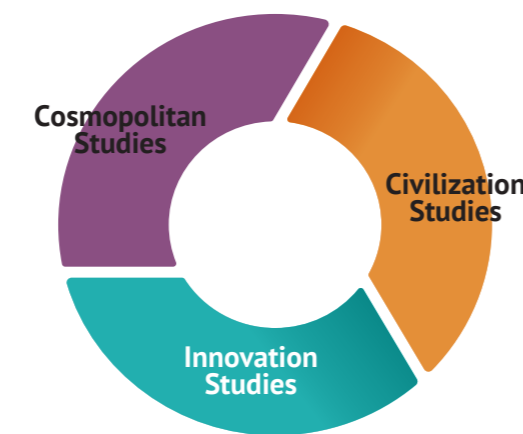
To be eligible to take ANU courses in this program, students must fulfill the minimum required passing GPA upon completion of a total of 32 RU credits, equivalent to one year of full-time study at GLA. Visit the website for details.

PROGRAM OUTLINE

Enrollment Period		April / September
Location	April Enrollment	Semester 1,2,3,4,7,8 : RU, Osaka Ibaraki Campus Semester 5,6 : ANU, Acton Campus (Canberra, Australia)
	September Enrollment	Semester 1,2,3,6,7,8 : RU, Osaka Ibaraki Campus Semester 4,5 : ANU, Acton Campus (Canberra, Australia)
Duration		4 years
Annual Student Intake		100 * The intake includes 10 students commencing their studies at ANU
Degree		RU : Bachelor of Global Liberal Arts ANU : Bachelor of Asia Pacific Affairs

RU College of Global Liberal Arts

The GLA curriculum is centered around Cosmopolitan Studies, Civilization Studies, and Innovation Studies. Students will select classes according to their interests, concerns, and desired career to advance in their course of study.



Learning Cultural and Social Diversity

Cultural Studies, Critical Area Studies, Media Studies, Arts in Society, Postcolonial Studies

Understanding Historical Transformation of Societies

Civilizations in Global History, Macrohistory and Metahistory, Evolution of Market Economy, History of Modern World, Evolution of Governance

Developing IT Literacy + Creating New Business Models

Knowledge and Innovation, Human Intelligence, Design and Society, Social Change with AI, Applied Research Method for Social Sciences

Japanese Studies Cluster

Contemporary Japan, Modern History of Japan, Japanese Philosophy, Japan in Global History

1 Lecture + 1 Tutorial

Students and Instructors meet twice per week for each subject; a combination of lectures and tutorials. This interactive cycle of knowledge input and output helps students absorb the knowledge acquired and nurture problem-solving abilities.



Academic Advising Center

① Academic Advising

GLA is committed to providing academic support to every student via the Academic Advising Center(AAC). The mission of the AAC is to help students navigate the GLA curriculum and to make sure students remain on track for graduation, all through individual guidance.

② Seminars on academic skills

In addition to its primary role of working with students, the AAC also works closely with the GLA leadership team to enrich the educational environment of GLA and to create new opportunities for students. This can involve organizing seminars or workshops to foster and deepen students' learning.

Curriculum

ANU College of Asia & the Pacific

Students select from a range of ANU courses in these subject areas. Studying abroad at ANU in the dual degree program is not just one special year but is also closely connected to students' learning before and after that year. Students will study abroad after building a strong foundation with ANU faculty members residing at Osaka Ibaraki Campus of RU during their first years in Japan, and upon their return, they will continue taking ANU courses in Japan, followed by Capstone Studies as a culmination of their two-year studies at both universities.



The Politics of China
Indonesia: Politics, Society,
and Development

(In)Stability on the
Korean Peninsula,
Politics of Nuclear
Weapons

Leadership and
Diplomacy,
Environment and
Development in the
Pacific

Economies of Emerging
Asia,
Islam in Southeast Asia

Learning Schedule

■ =at RU ■ =at ANU

	year1		year2		year3		year4	
	semester1	semester2	semester3	semester4	semester5	semester6	semester7	semester8
September Enrollment	RU Courses		RU+ANU Courses	ANU Courses	RU+ANU Courses			
April Enrollment	RU Courses		RU+ANU Courses	ANU Courses	RU+ANU Courses			

*In order to enroll in the dual undergraduate degree program with ANU, students must fulfill the minimum required passing GPA upon completion of one year of study equivalent to a full-time load (32 credits). Visit our website for details.

Prospective Career Path

- Government agencies
- Consultancy firms
- Business and trade organizations
- Development and aid organizations
- Media agencies
- Universities
- Research organizations



Live & Learn

OIC Global House for GLA students

On-campus Residence

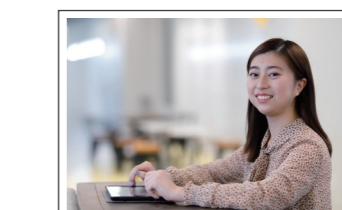
Ritsumeikan University OIC Global House located in Wakebayashi International Plaza is newly built to house both domestic and international students, most of whom study at the College of Global Liberal Arts. This five-story building comprises of a dormitory with 200 individual rooms from the 2nd to 5th floor. A multi-purpose hall, a Japanese-style tatami mat room with a Japanese garden, a community space for events and meetings are provided on the 1st and 2nd floors.



Housing during the study at ANU

Student accommodation will be available throughout the academic year students spend studying at ANU in Canberra. More information will be available after enrollment.

Student's voice



Riko Yamamoto [2nd year student]

When I visited Ritsumeikan University, I instantly pictured my university life in a well organized environment here at Osaka Ibaraki Campus. With faculty specializing in various fields, I was sure that GLA would be an ideal place for me to broaden my perspective. I was also fascinated by the dual degree program, which is rare in Japan. After I enrolled, I discovered myself seeing things more deeply and critically through classes. As a result, I began to analyze things from multiple perspectives, rather than from one perspective, and make statements based on my opinion. I truly enjoy living in the G house dorm with international students. Sharing the kitchen allows you to learn a new culture and expand your community through dining. There are also recreational facilities, so you can easily get along with everyone. The building is connected to the school, so it is very convenient to go to classes or go to the library. The study environment is well equipped, and there are various self study rooms and open spaces, so you can study according to your life style.